



Llevant 96 / Live or invest in Palma de Mallorca



Llevant 96

The opportunity to live or invest in a new residential area in Palma de Mallorca, just 500 m from Portixol and stone's throw from Ca'n Pere Antoni beach.

Llevant 96 boasts modern homes designed according to high-quality standards: apartments and flats from the ground floor to the penthouse in a contemporary building with terrific leisure and relaxation facilities.



Llevant 96

Exclusive one- to four-bedroom homes with stunning terraces, garage space and storage room, in the heart of a private development with a common garden area, pool and fully equipped gym.



Llevant 96

Nou Llevant, a new neighbourhood in Palma that combines residential spaces with modern facilities; a sector undergoing complete transformation that offers innovation and quality of life.

The entrance to **Llevant 96** can be found on Avinguda Mèxic, 18, a strategic point.

This privileged location is close to both the city centre and the beach, offering peace of mind and quality of life. The area has been restored and boasts a wide variety of services.

Llevant 96 is extremely well connected both by motorway and public transport and is easy to reach from the airport. It's just a stone's throw from Portixol, an old fishing village with special waterfront leisure and dining options, with views of the beach or sailing club.



Llevant 96

Llevant 96 consists of two buildings, one with seven floors and the other with four (including the ground floor in each case). They were designed following the criteria of modular, rationalist and eco-friendly architecture.

The homes at **Llevant 96** are efficient and sustainable—perfect for those who put comfort and quality first. These are homes to enjoy a full life in the right location: a restored area with everything you might need within reach.



Llevant 96

Llevant 96 homes stand out thanks to their perfectly integrated design, with façades looking out over the garden area; large, rich living spaces with magnificent terraces that expand the home and enhance wellbeing. With several floor plans to choose from, there's something to meet everybody's needs.

Apartments and flats, from the ground floor to the penthouse, in two buildings, joined by a common garden area.









The façades feature an exterior insulation and finish system (EIFS) to ensure high thermal and acoustic insulation.



The homes have individual air conditioning through ducts and grilles in the living room and bedrooms, each room with its own thermostat.



The exterior carpentry guarantees thermals gaps, with double-glazed security and acoustic windows and an air chamber to improve the thermal comfort of the home.



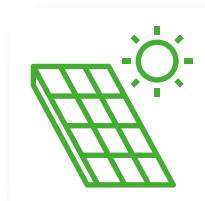
In accordance with CTE-HS-3 (Technical Building/Health Code - Ventilation), a ventilation system with ENERGY RECOVERY (admission and extraction) was implemented. This system guarantees high-quality indoor air and low energy consumption.



Single-lever chrome taps with water and energy-saving system.



The community pool has a saline cleaning system that uses natural, non-polluting and environmentally friendly substances.



The production of domestic hot water is centralized through solar panels and a condensing gas boiler, with individual consumption metres. This environmentally friendly system maximises the use of solar energy, resulting in significant energy savings.



The entrances, walkways, driveways and common areas feature low-consumption LED lighting.

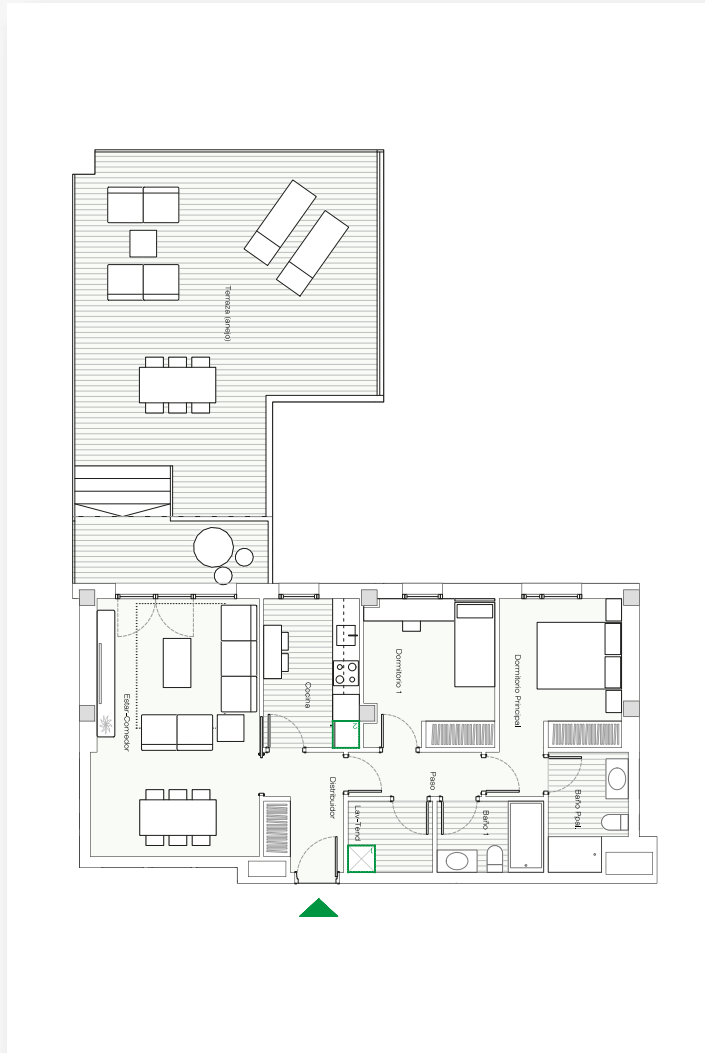


"A" energy rating

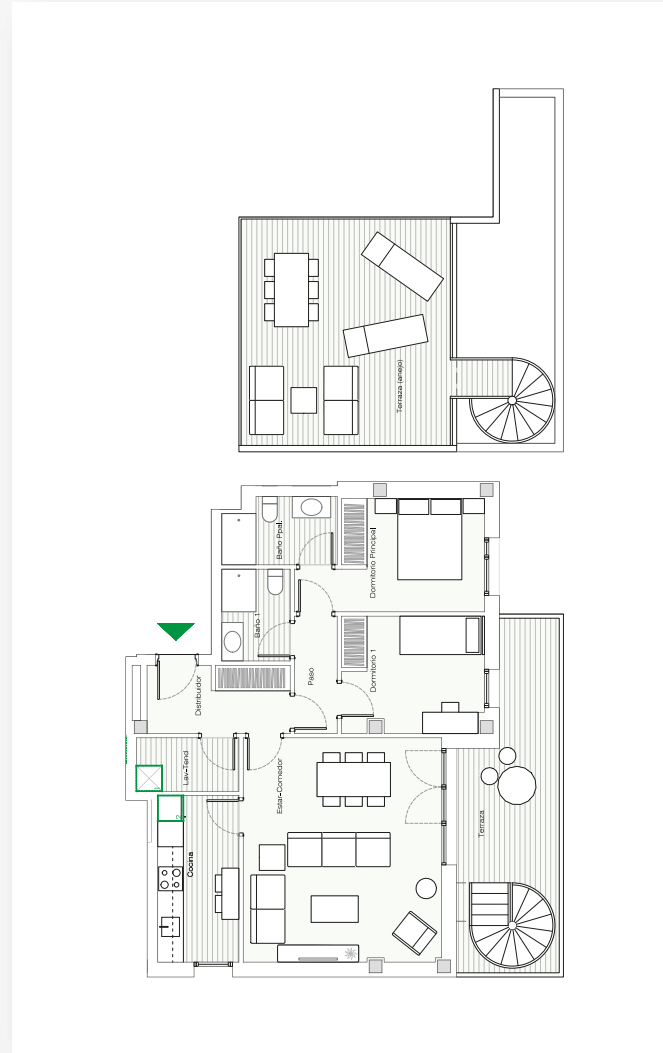
The building's low CO2 emissions and low energy consumption make it sustainable and environmentally friendly.

CHOOSE YOUR HOME...

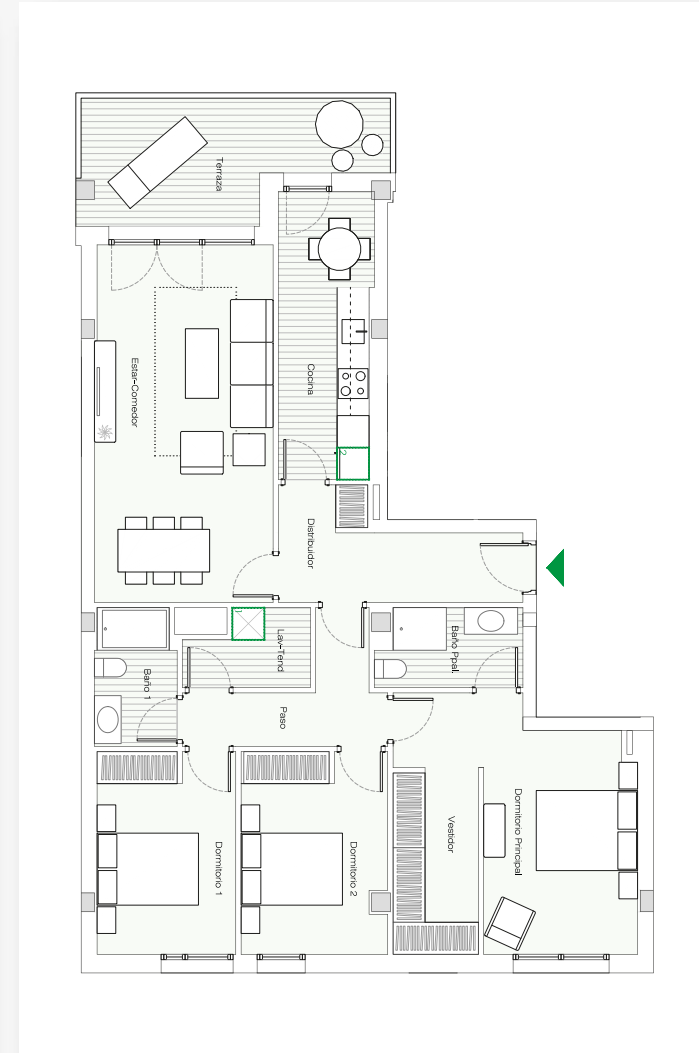
Llevant 96



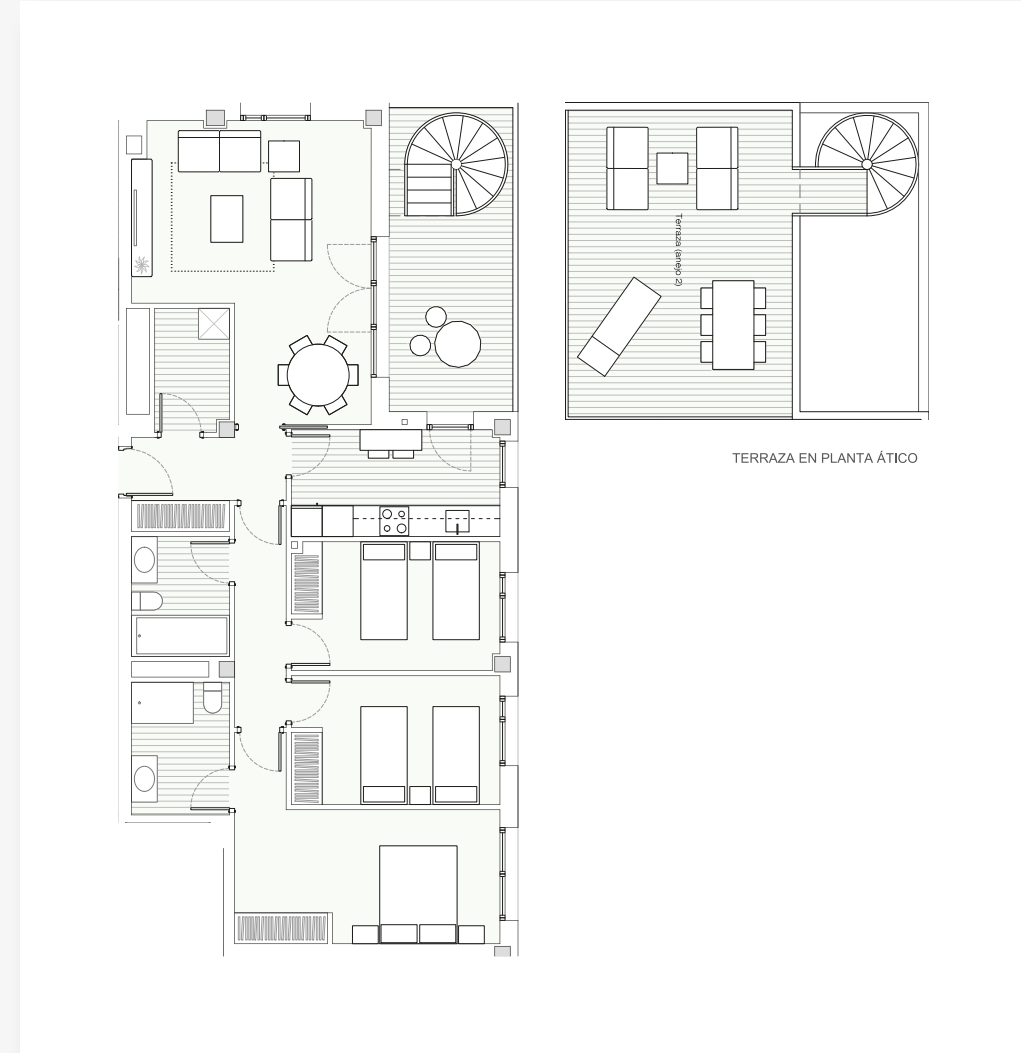
2-BEDROOM FLAT



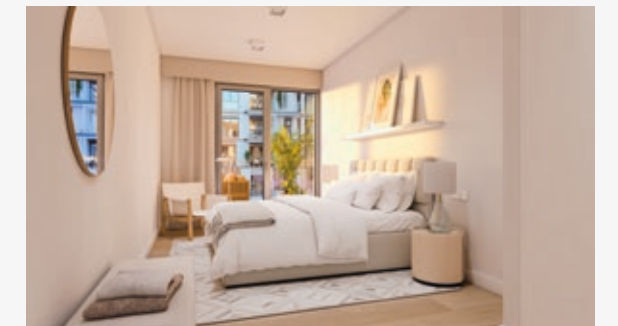
2-BEDROOM PENTHOUSE



3-BEDROOM FLAT



3-BEDROOM PENTHOUSE





At AVANTESPACIA, we build spaces to live in. We design, construct and bring spaces to life while staying true to our deep-rooted commitment to efficiency and sustainability.

Spaces meant to be enjoyed
Spaces that listen
Spaces you can trust
Spaces designed for people We are a domestic and international real-estate group with a clear objective: to bring value to the spaces we create while respecting the environment.

That's what sets us apart.

AVANTESPACIA

Living spaces

Llevant 96

SALES OFFICE: Avinguda Mèxic nº 2 - bajo - 07006 Palma - Illes Balears - Tlf.: +34 971 206 345 - www.avantespacia.com

AVANTESPACIA

Living spaces